

SUBURB REPORT

Professionals*

Mount Annan NSW 2567

Email: steve.diggins@professionalsnarellan.com.au
Phone: 02 4623 0380



CoreLogic®



47km
Distance from GPO

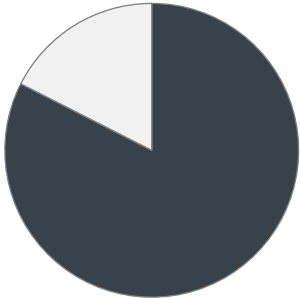


11.7k
Population
↑10.8%
5 year population change



11 years
Average length of ownership

18%



82%

Owner Occupiers Renters



The size of Mount Annan is approximately 10.2 square kilometres. It has 33 parks covering nearly 56.6% of total area. The population of Mount Annan in 2011 was 10,539 people. By 2016 the population was 11,681 showing a population growth of 10.8% in the area during that time. The predominant age group in Mount Annan is 0-9 years. Households in Mount Annan are primarily couples with children and are likely to be repaying \$1800 - \$2399 per month on mortgage repayments. In general, people in Mount Annan work in a clerical occupation. In 2011, 83.9% of the homes in Mount Annan were owner-occupied compared with 80.4% in 2016. Currently the median sales price of houses in the area is \$1,035,000.

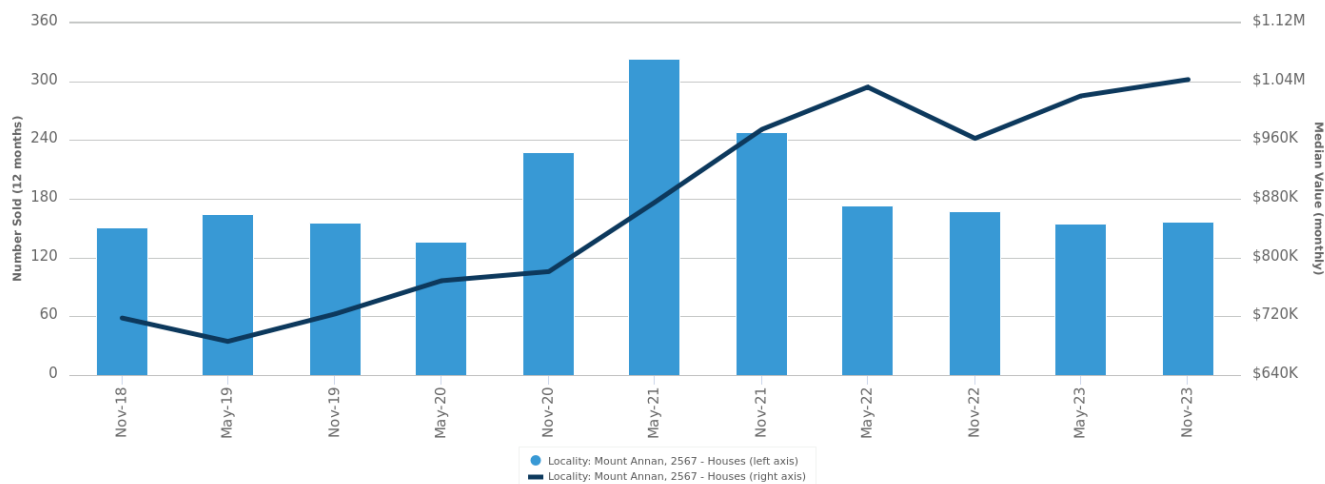
	Total dwellings	Total new listings*	Median Value	Total number currently listed
	3,582	139	\$1,051,443	31
	135	6	\$725,898	1

*Total number of unique properties listed for sale over the past 12 months.

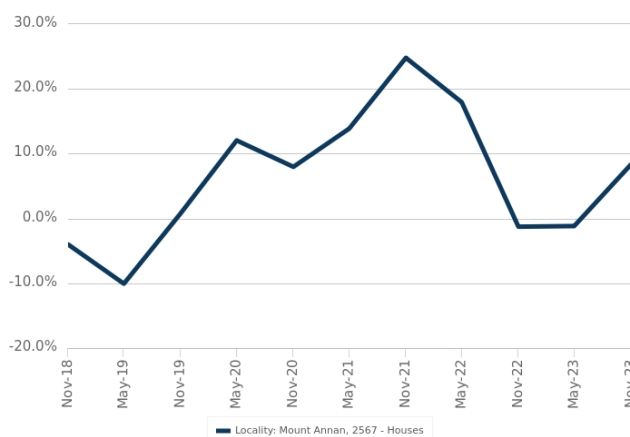


Houses: For Sale

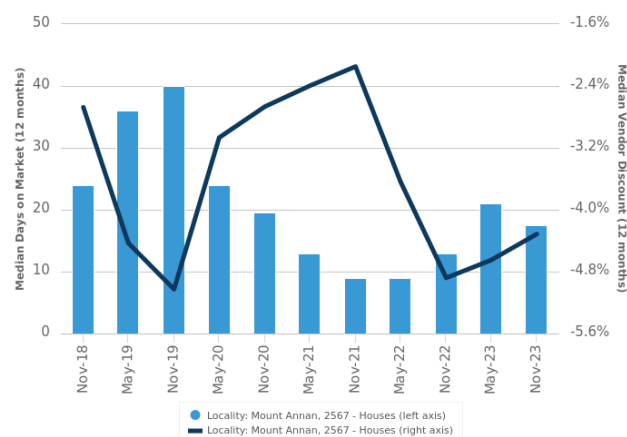
Number Sold vs. Median Value (monthly)



Change in Median Value



Median Days on Market vs. Median Vendor Discount



\$\$\$

Upper Quartile Price*

\$1,150,000

The 75th percentile sale price of sales over the past 12 months within the suburb.

\$\$

Median Price*

\$1,035,000

The middle sale price of all transactions recorded over the past 12 months within the suburb. Note that sale prices lower than \$10,000 and higher than \$80,000,000 are excluded from the analysis.

\$

Lower Quartile Price*

\$865,000

The 25th percentile sale price of sales over the past 12 months within the suburb.

*Statistics are calculated over a rolling 12 month period



Houses: Market Activity Snapshot

On The Market



BEDROOMS

Recently Sold



There are no 2 bedroom Houses on the market in this suburb There are no recently sold 2 bedroom Houses in this suburb



BEDROOMS



There are no 3 bedroom Houses on the market in this suburb



76 Burnett Avenue Mount Annan NSW 2567

Sold on 21 Feb 2024
\$0



20/221A Waterworth Drive Mount Annan NSW 2567

Sold on 12 Feb 2024
\$800,000*



BEDROOMS



65 Chain-o-ponds Circuit Mount Annan NSW 2567

Listed on 23 Oct 2023
Auction Guide \$940,000



16 Pomaderris Circuit Mount Annan NSW 2567

Sold on 23 Feb 2024
\$930,000*



12 Fryer Street Mount Annan NSW 2567

Sold on 12 Feb 2024
\$1,020,000*

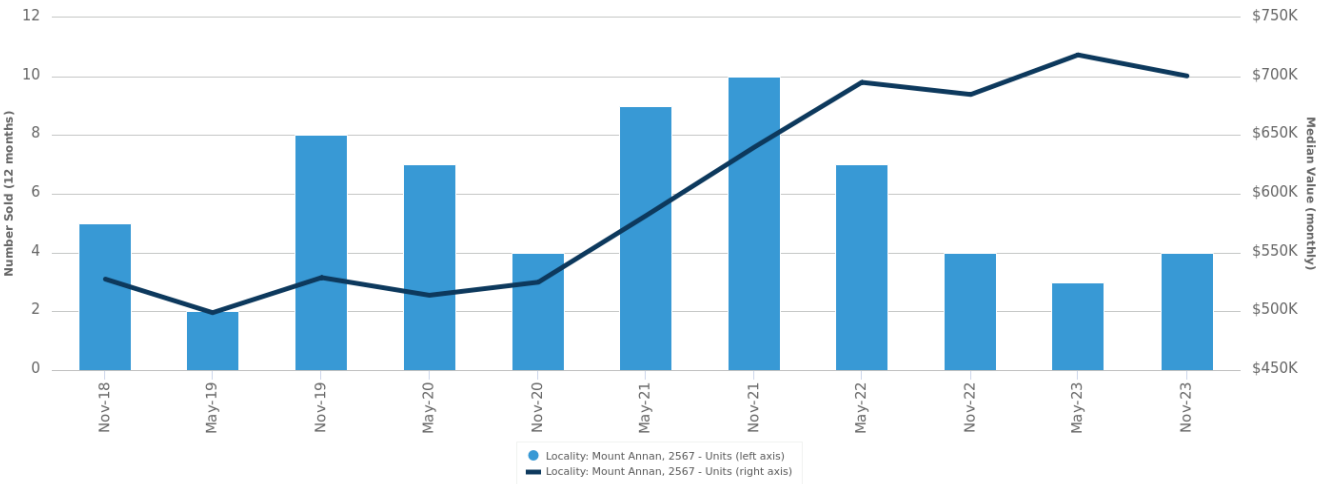


= number of houses currently On the Market or Sold within the last 6 months

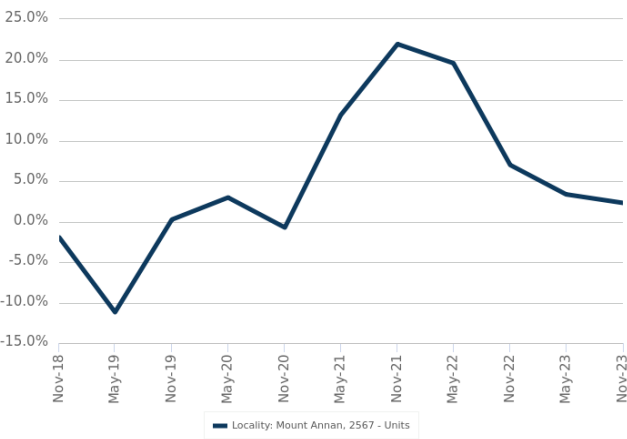
*Agent advised

Units: For Sale

Number Sold vs. Median Value (monthly)



Change in Median Value



\$\$\$

Upper Quartile Price*

\$715,832

The 75th percentile sale price of sales over the past 12 months within the suburb.

\$\$

Median Price*

\$642,625

The middle sale price of all transactions recorded over the past 12 months within the suburb. Note that sale prices lower than \$10,000 and higher than \$80,000,000 are excluded from the analysis.

\$

Lower Quartile Price*

\$600,500

The 25th percentile sale price of sales over the past 12 months within the suburb.

*Statistics are calculated over a rolling 12 month period

Units: Market Activity Snapshot

On The Market

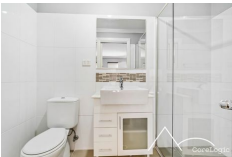
0

1
BEDROOMS

There are no 1 bedroom Units on the market in this suburb

Recently Sold

1



18 Stipa Lane Mount Annan
NSW 2567

Sold on 03 Oct 2023
\$550,000



0

2
BEDROOMS

There are no 2 bedroom Units on the market in this suburb

1



236 Mount Annan Drive
Mount Annan NSW 2567

Sold on 25 Sep 2023
\$965,000



0

3
BEDROOMS

There are no 3 bedroom Units on the market in this suburb

3



63 Clover Street Mount
Annan NSW 2567

Sold on 02 Feb 2024
Not Disclosed



4 Hibiscus Circle Mount
Annan NSW 2567

Sold on 05 Oct 2023
\$0

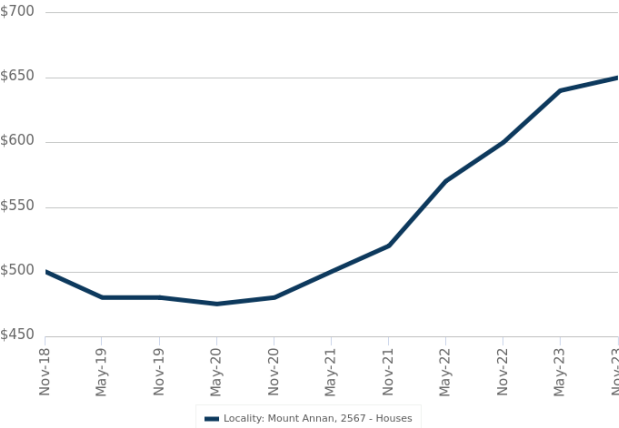


= number of units currently On the Market or Sold within the last 6 months

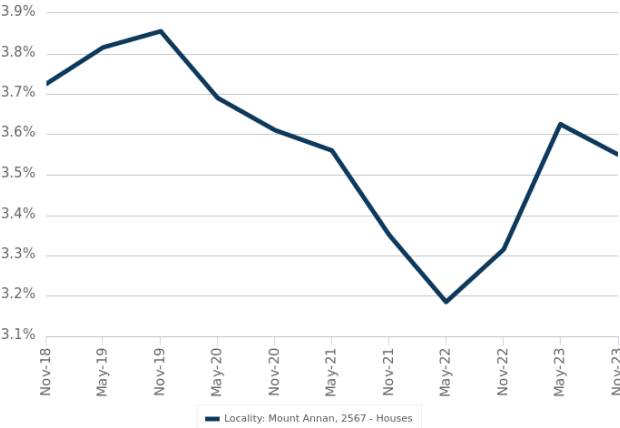


Houses: For Rent

Median Asking Rent (12 months)



Indicative Gross Rental Yield (12 months)



Houses: Rental Activity Snapshot

For Rent



0



2

BEDROOMS

There are no 2 bedroom Houses for rent in this suburb



6



3

BEDROOMS



14 Goodenia Road Mount Annan NSW 2567

Listed on 29 Feb 2024
\$750/W



5



2



500m²



20/221a Waterworth Drive Mount Annan NSW 2567

Listed on 29 Feb 2024
\$700/W



2



2



248m²



7



4

BEDROOMS



38 Kokoda Circuit Mount Annan NSW 2567

Listed on 01 Mar 2024
\$700/W



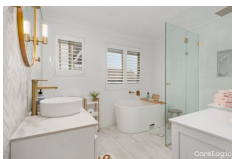
2



2



500m²



67 Rose Drive Mount Annan NSW 2567

Listed on 28 Feb 2024
\$830/W



2



2



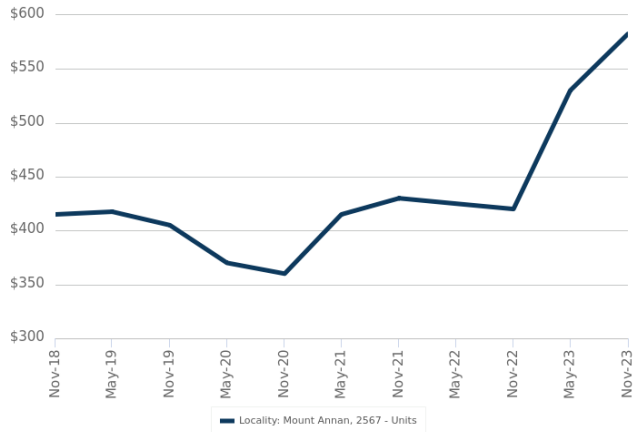
909m²



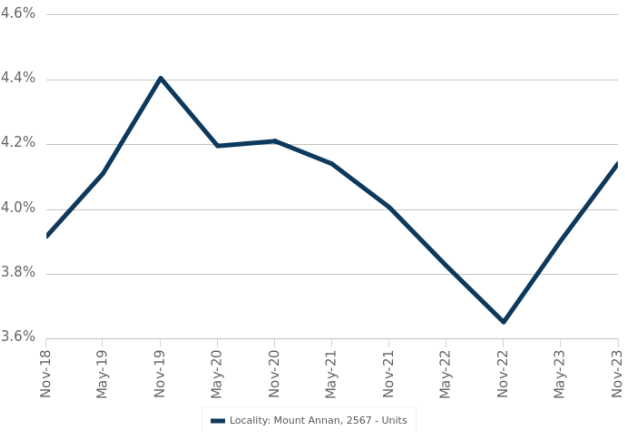
= number of houses observed as On the Market for Rent within the last month

Units: For Rent

Median Asking Rent (12 months)



Indicative Gross Rental Yield (12 months)



Units: Rental Activity Snapshot

For Rent



0



1

BEDROOMS

There are no 1 bedroom Units for rent in this suburb



3



2

BEDROOMS



32/221a Waterworth Drive
Mount Annan NSW 2567

Listed on 04 Dec 2023
\$500/W



236 Mount Annan Drive
Mount Annan NSW 2567

Listed on 01 Dec 2023
\$540/W



290m²



0



3

BEDROOMS

There are no 3 bedroom Units for rent in this suburb



= number of units observed as On the Market for Rent within the last month

DISCLAIMER

Copyright

This publication reproduces materials and content owned or licenced by CoreLogic and may include data, statistics, estimates, indices, photographs, maps, tools, calculators (including their outputs), commentary, reports and other information (CoreLogic Data).

CoreLogic Standard Disclaimer

The CoreLogic Data provided in this publication is of a general nature and should not be construed as specific advice or relied upon in lieu of appropriate professional advice.

While CoreLogic uses commercially reasonable efforts to ensure the CoreLogic Data is current, CoreLogic does not warrant the accuracy, currency or completeness of the CoreLogic Data and to the full extent permitted by law excludes liability for any loss or damage howsoever arising (including through negligence) in connection with the CoreLogic Data.

This publication contains data and statistics provided by the Australian Bureau of Statistics, available at <http://www.abs.gov.au/> and reproduced under Creative Commons Attribution 2.5 <http://creativecommons.org/licenses/by/2.5/au/legalcode>.

Mapping Data

A map showing an area or boundaries of a property is indicative only and may not be complete or accurate.

State and Territory Data

Contains property sales information provided under licence from the Land and Property Information ("LPI"). RP Data Pty Ltd trading as CoreLogic is authorised as a Property Sales Information provider by the LPI.

If you have any questions or concerns about the information in this report, please contact our customer care team.

Within Australia: **1300 734 318**
Outside Australia: **(+61) 7 3114 9999**
Email us: **customercare@corelogic.com.au**