

SUBURB REPORT



Professionals*

Mount Annan NSW 2567

Email: steve.diggins@professionalsnarellan.com.au
Phone: 02 4623 0380

CoreLogic



47km
Distance from GPO

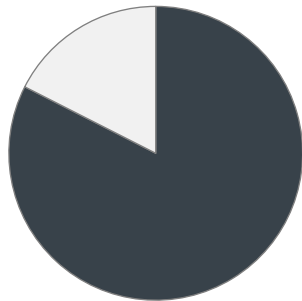


11.7k
Population
↑10.8%
5 year population change



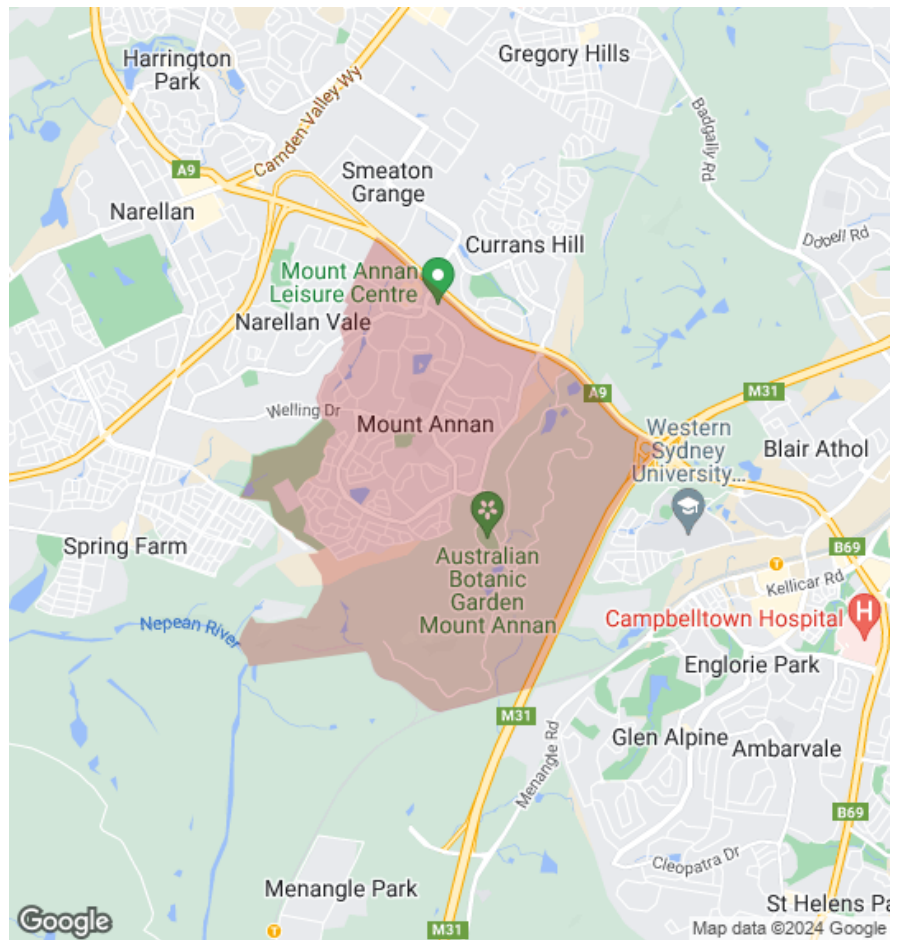
11 years
Average length of ownership

18%



82%

■ Owner Occupiers ■ Renters



The size of Mount Annan is approximately 10.2 square kilometres. It has 33 parks covering nearly 56.6% of total area. The population of Mount Annan in 2011 was 10,539 people. By 2016 the population was 11,681 showing a population growth of 10.8% in the area during that time. The predominant age group in Mount Annan is 0-9 years. Households in Mount Annan are primarily couples with children and are likely to be repaying \$1800 - \$2399 per month on mortgage repayments. In general, people in Mount Annan work in a clerical occupation. In 2011, 83.9% of the homes in Mount Annan were owner-occupied compared with 80.4% in 2016. Currently the median sales price of houses in the area is \$1,050,000.

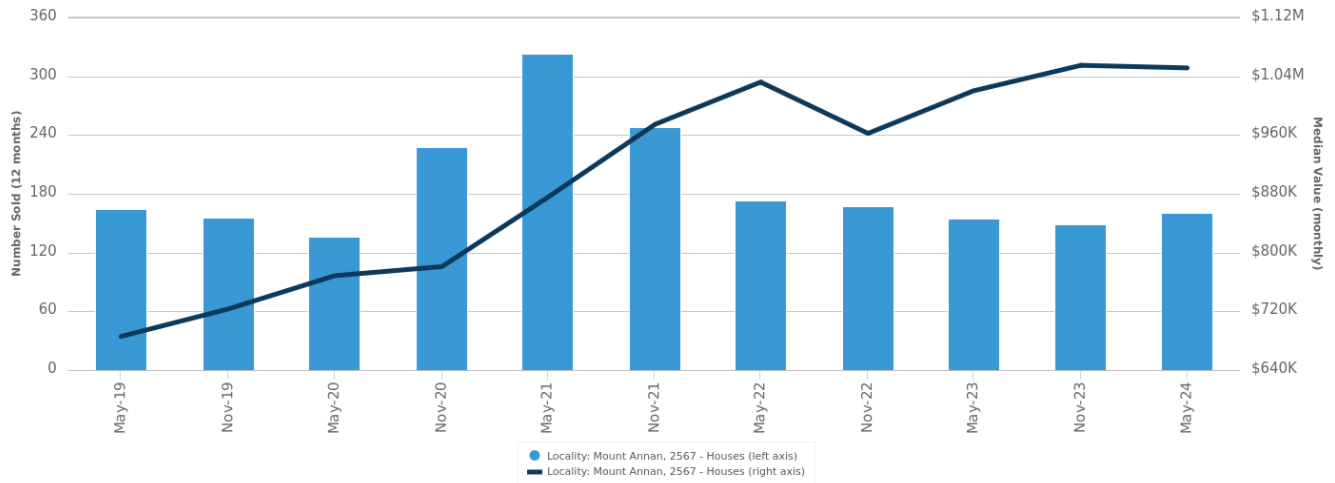
	Total dwellings	Total new listings*	Median Value	Total number currently listed
	3,623	145	\$1,072,728	18
	125	4	\$661,695	0

*Total number of unique properties listed for sale over the past 12 months.



Houses: For Sale

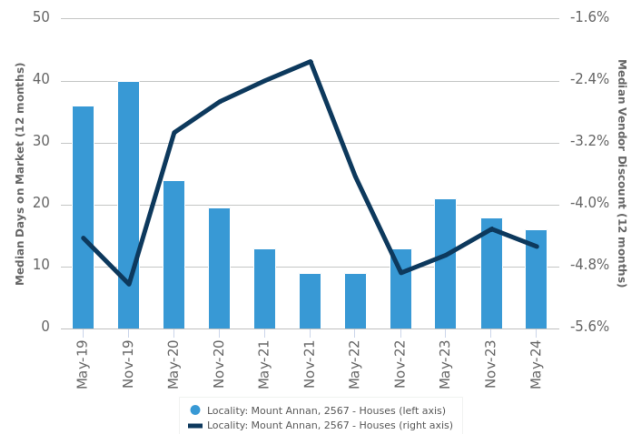
Number Sold vs. Median Value (monthly)



Change in Median Value



Median Days on Market vs. Median Vendor Discount



\$\$\$

Upper Quartile Price*

\$1,190,000

The 75th percentile sale price of sales over the past 12 months within the suburb.

\$\$

Median Price*

\$1,050,000

The middle sale price of all transactions recorded over the past 12 months within the suburb. Note that sale prices lower than \$10,000 and higher than \$80,000,000 are excluded from the analysis.

\$

Lower Quartile Price*

\$925,000

The 25th percentile sale price of sales over the past 12 months within the suburb.

*Statistics are calculated over a rolling 12 month period

Houses: Market Activity Snapshot

On The Market

Recently Sold

0

2
BEDROOMS

0

There are no 2 bedroom Houses on the market in this suburb There are no recently sold 2 bedroom Houses in this suburb

4

3
BEDROOMS

32



1 The Ponds Mount Annan NSW 2567
Listed on 31 Aug 2024
PROPERTY LAUNCH - \$850,000 - \$900,000

2
 1
 392m²



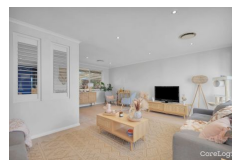
80 Annanvale Circuit Mount Annan NSW 2567
Sold on 30 Aug 2024
Not Disclosed

-
 2
 167m²



6 Coral Pea Court Mount Annan NSW 2567
Listed on 28 Aug 2024
\$890,000-\$920,000

2
 2
 539m²



17 Todd Place Mount Annan NSW 2567
Sold on 13 Aug 2024
\$950,000*

-
 1
 692m²

9

4
BEDROOMS

46



16 Burnett Avenue Mount Annan NSW 2567
Listed on 02 Sep 2024
FOR SALE

2
 2
 2,115m²



44 Aotus Circuit Mount Annan NSW 2567
Sold on 19 Aug 2024
\$900,000

2
 2
 633m²



6 Dianella Place Mount Annan NSW 2567
Listed on 29 Aug 2024
Offers Invited!

2
 2
 682m²



13 Sarah West Place Mount Annan NSW 2567
Sold on 09 Aug 2024
\$1,190,000*

2
 2
 641m²

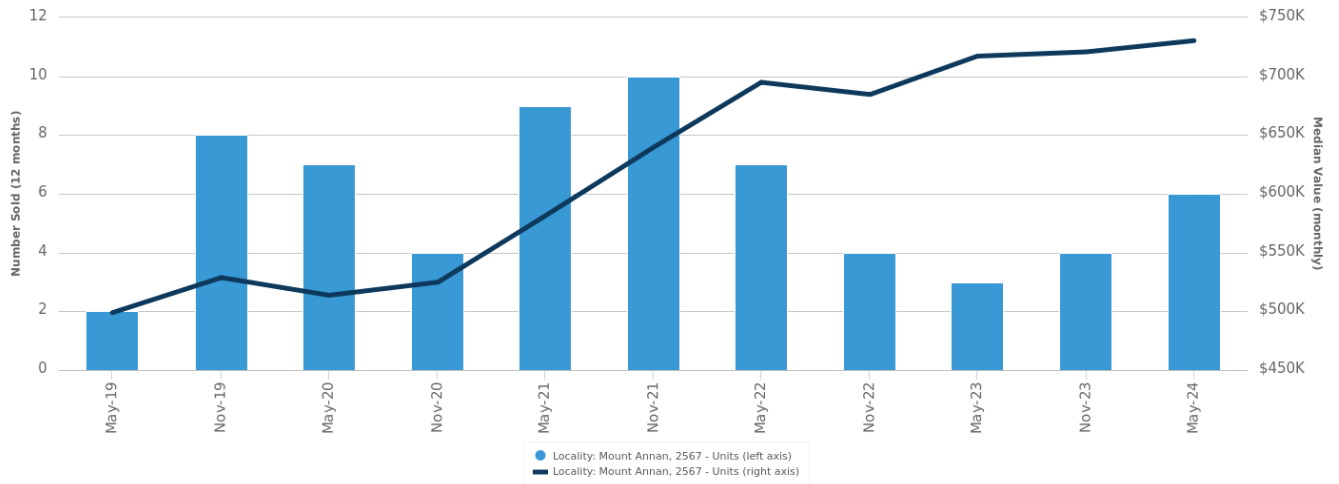


= number of houses currently On the Market or Sold within the last 6 months

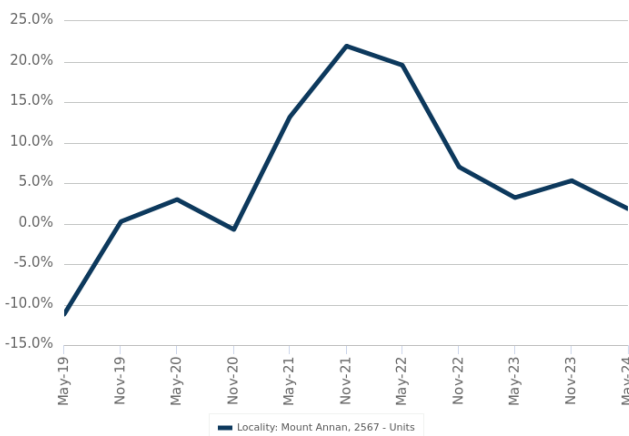
*Agent advised

Units: For Sale

Number Sold vs. Median Value (monthly)



Change in Median Value



\$\$\$

Upper Quartile Price*

\$715,832

The 75th percentile sale price of sales over the past 12 months within the suburb.

\$\$

Median Price*

\$642,625

The middle sale price of all transactions recorded over the past 12 months within the suburb. Note that sale prices lower than \$10,000 and higher than \$80,000,000 are excluded from the analysis.

\$

Lower Quartile Price*

\$600,500

The 25th percentile sale price of sales over the past 12 months within the suburb.

*Statistics are calculated over a rolling 12 month period

Units: Market Activity Snapshot

On The Market



There are no 1 bedroom Units on the market in this suburb



Recently Sold



There are no recently sold 1 bedroom Units in this suburb



There are no 2 bedroom Units on the market in this suburb



**35/221A Waterworth Drive
Mount Annan NSW 2567**

Sold on 25 May 2024
\$567,500



**40/221A Waterworth Drive
Mount Annan NSW 2567**

Sold on 23 May 2024
\$560,000



There are no 3 bedroom Units on the market in this suburb



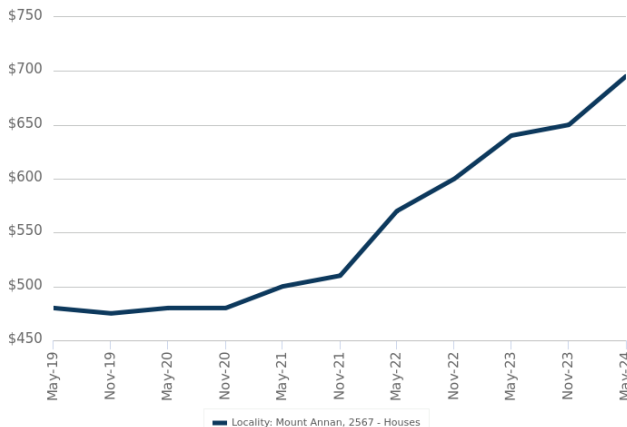
There are no recently sold 3 bedroom Units in this suburb



= number of units currently On the Market or Sold within the last 6 months

Houses: For Rent

Median Asking Rent (12 months)



Indicative Gross Rental Yield (12 months)



Houses: Rental Activity Snapshot

For Rent

0

2
BEDROOMS

There are no 2 bedroom Houses for rent in this suburb

2

3
BEDROOMS



15 Swansona Avenue
Mount Annan NSW 2567

Listed on 26 Aug 2024
\$675/W

2

2

420m²



11 Dunbar Place
Mount Annan NSW 2567

Listed on 02 Aug 2024
\$700/W

4

1

469m²

1

4
BEDROOMS



188 Welling Drive
Mount Annan NSW 2567

Listed on 30 Aug 2024
\$825/W

2

2

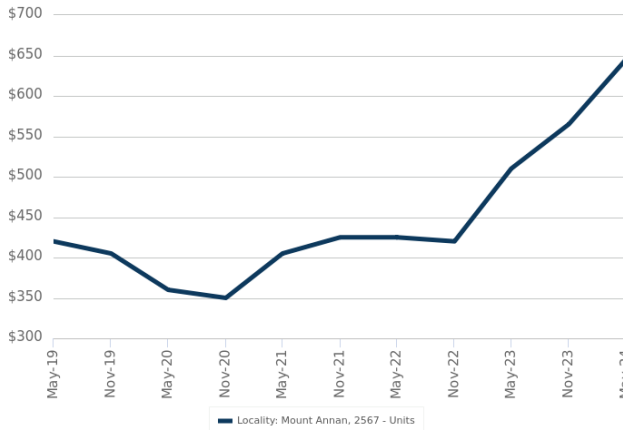
728m²



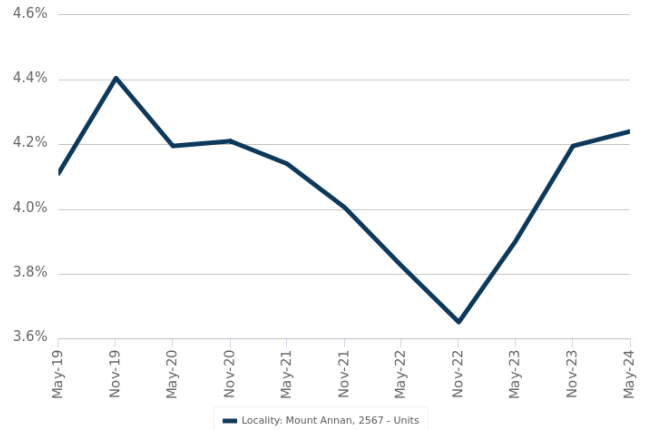
= number of houses observed as On the Market for Rent within the last month

Units: For Rent

Median Asking Rent (12 months)



Indicative Gross Rental Yield (12 months)



Units: Rental Activity Snapshot

For Rent

2 1 BEDROOMS



15 Stipa Lane Mount Annan NSW 2567

Listed on 29 Aug 2024
\$420/W

1
 1
 389m²



2 Dunbar Place Mount Annan NSW 2567

Listed on 16 Aug 2024
\$360/W

-
 1
 689m²

0 2 BEDROOMS

There are no 2 bedroom Units for rent in this suburb

0 3 BEDROOMS

There are no 3 bedroom Units for rent in this suburb

= number of units observed as On the Market for Rent within the last month

DISCLAIMER

Copyright

This publication reproduces materials and content owned or licenced by CoreLogic and may include data, statistics, estimates, indices, photographs, maps, tools, calculators (including their outputs), commentary, reports and other information (CoreLogic Data).

CoreLogic Standard Disclaimer

The CoreLogic Data provided in this publication is of a general nature and should not be construed as specific advice or relied upon in lieu of appropriate professional advice.

While CoreLogic uses commercially reasonable efforts to ensure the CoreLogic Data is current, CoreLogic does not warrant the accuracy, currency or completeness of the CoreLogic Data and to the full extent permitted by law excludes liability for any loss or damage howsoever arising (including through negligence) in connection with the CoreLogic Data.

This publication contains data and statistics provided by the Australian Bureau of Statistics, available at <http://www.abs.gov.au/> and reproduced under Creative Commons Attribution 2.5 <http://creativecommons.org/licenses/by/2.5/au/legalcode>.

Mapping Data

A map showing an area or boundaries of a property is indicative only and may not be complete or accurate.

State and Territory Data

Contains property sales information provided under licence from the Land and Property Information ("LPI"). RP Data Pty Ltd trading as CoreLogic is authorised as a Property Sales Information provider by the LPI.

If you have any questions or concerns about the information in this report, please contact our customer care team.

Within Australia: **1300 734 318**
Outside Australia: **(+61) 7 3114 9999**
Email us: customercare@corelogic.com.au